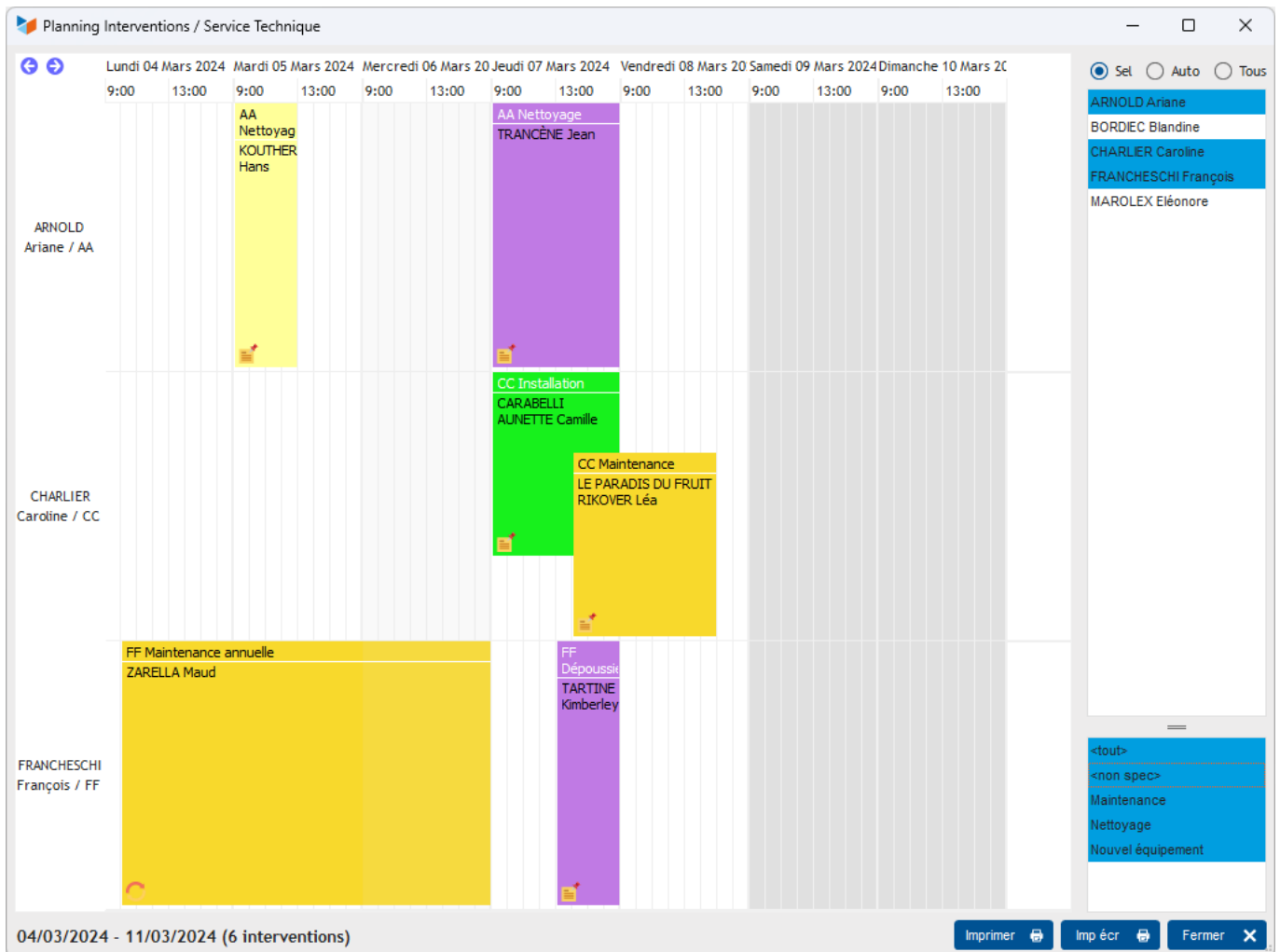


Intervention planning



A1 proofreading not yet effective for this page. In the meantime, you can ask any questions on the [forum](#).

Interventions can be displayed on a schedule.



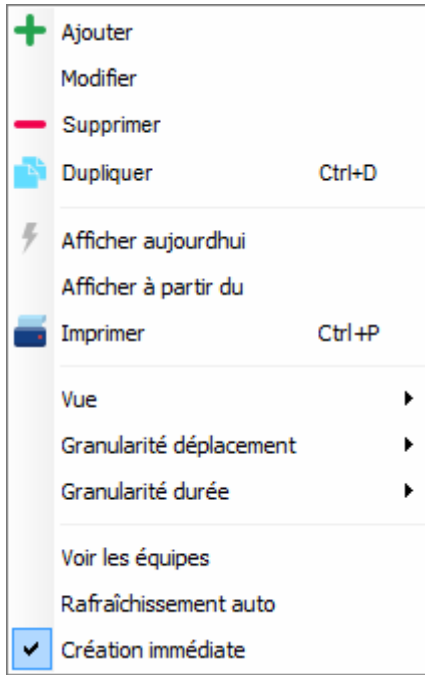
They can be colored according to their type, if a color has been assigned to the type of intervention.

The radio button allows you to choose 3 options:

- all: all users are displayed
- auto: users are displayed if they have an action recorded for the period
- salt: you can select the users you want to display.

The user list context menu allows you to select users from a pool or service.

Context menu



Among the options available:

- **View teams** allows you to display the schedule of the teams carrying out the interventions (otherwise, the schedules displayed are only those of the main stakeholders)
- **Auto refresh** allows you to automatically refresh the screen: with each modification, the screen displays the new data, which is practical when, for example, it is permanently displayed and used to monitor an activity in progress.

Other Activity articles

- [Action planning](#)
- [Actions](#)
- [Agenda of actions](#)
- [Ingredients](#)
- [Intervention planning](#)
- [Interventions](#)
- [Personal service tax certificate](#)
- [Planned actions](#)
- [Typical process and steps](#)

From: <https://manuel.gestan.fr/> - **Le manuel de Gestan**

Permanent link: <https://manuel.gestan.fr/en/wiki/activite/planninginter>

Last update: **2025/06/24 21:16**