

Import a chart of accounts



A1 proofreading not yet effective for this page. In the meantime, you can ask any questions on the [forum](#).

During installation, Gestan loads by default a French accounting chart intermediate between the standard and the developed (see below).

But in order to use the appropriate accounting coding in force in your country, it is possible:

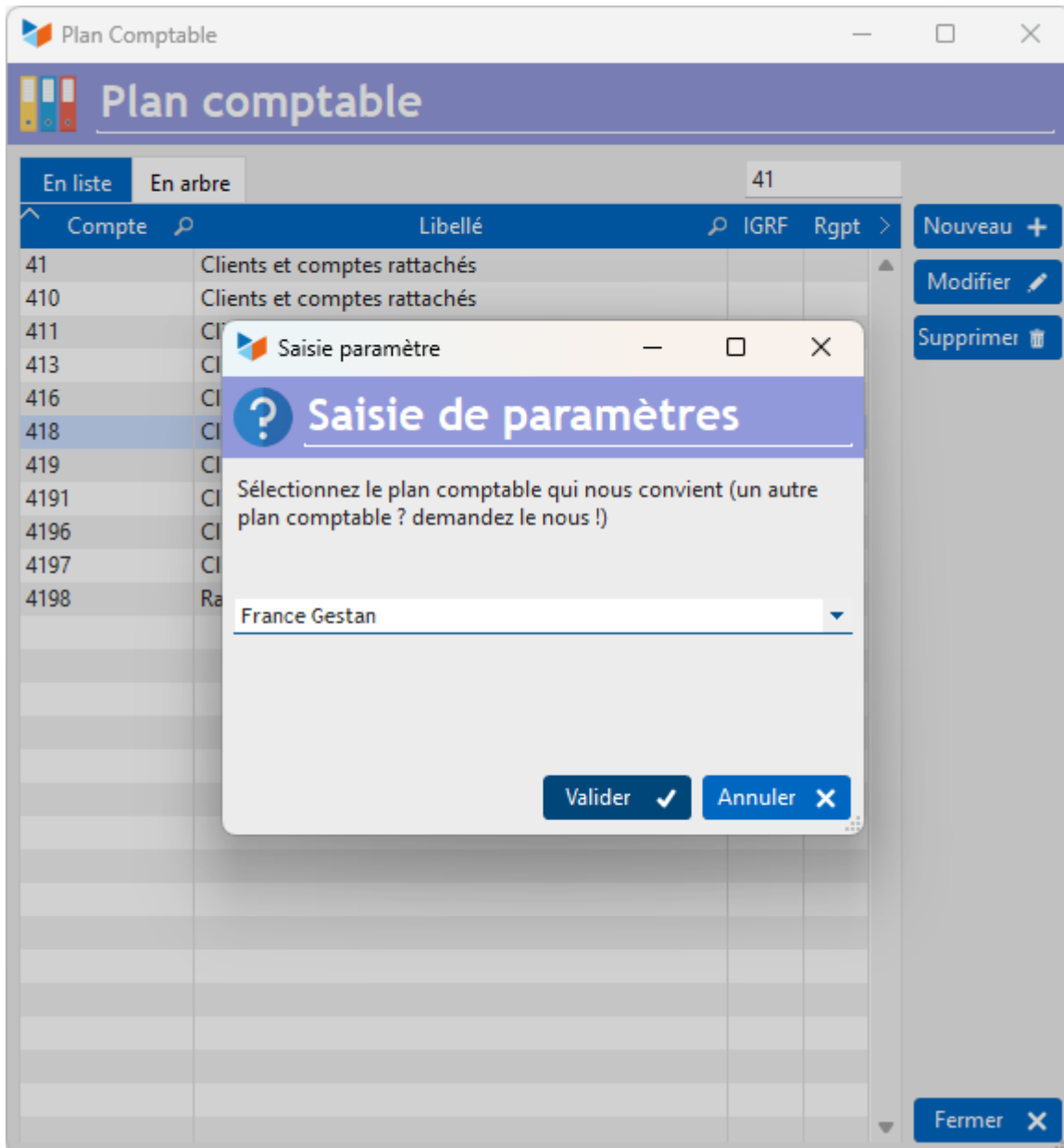
- download classic accounting plans
- to import any accounting plan into Gestan via a text file.



This program is reserved for users with administrative privileges. As with all programs performing mass updates, it is recommended to make a backup of the database before use, or to carry out the operation on a test database before launching the operation on a production database.

Downloading charts of accounts

Access: *Tools* → *Accounting settings* → *Chart of accounts*, then context menu of the list of accounts → *Download a chart of accounts*



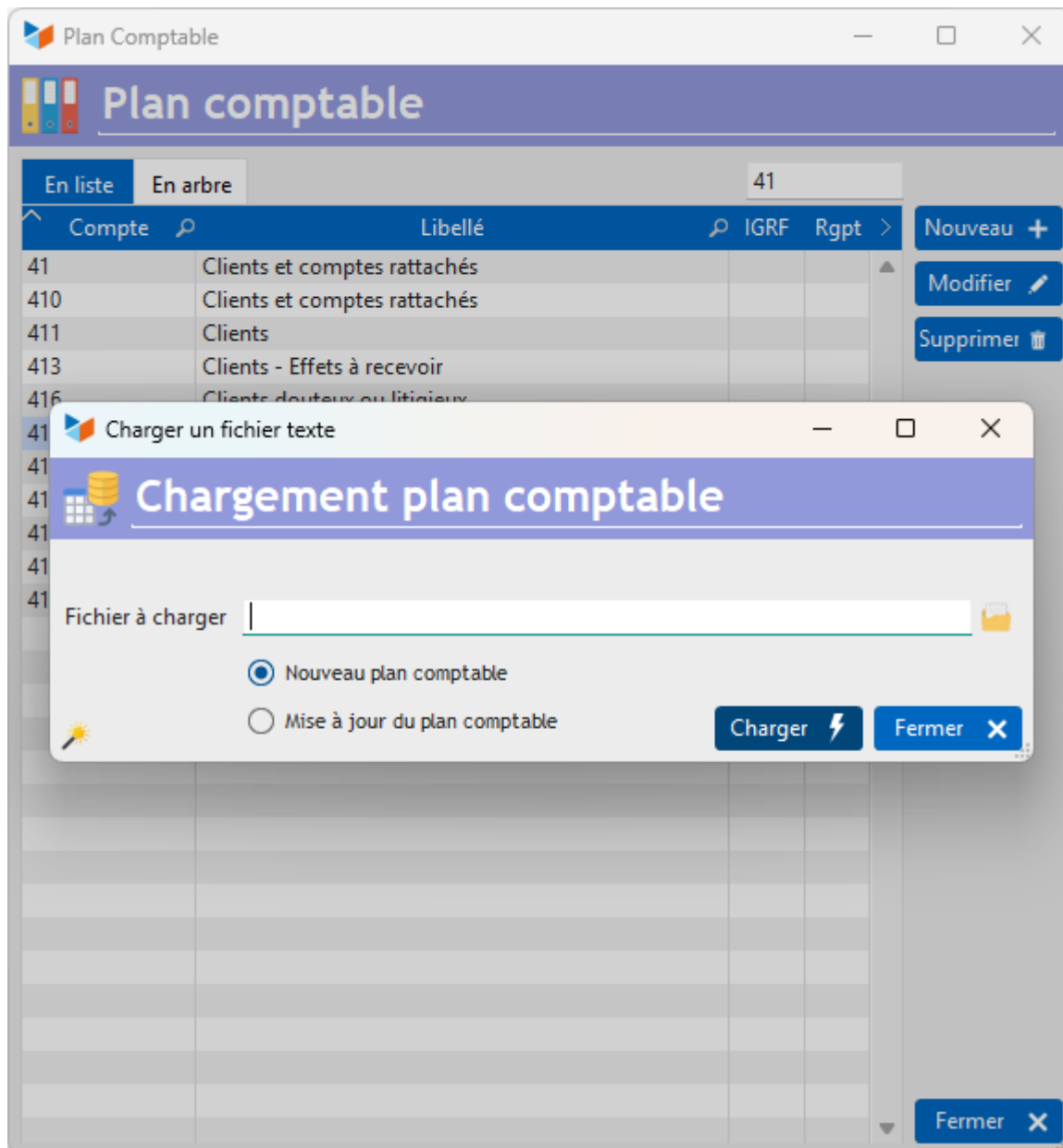
With this option, you can directly download, in the correct format, the following accounting plans:

- Belgium
- France abbreviated
- France developed
- France [Gestan]
- France standard
- Luxembourg
- Morocco
- OHADA
- Swiss independent

☀️ If your country is not in this list, you can ask your country's tax authorities and send it to us so that we can include it in the files available for download.

Loading a text file

Access: Tools → Accounting settings → Chart of accounts,
then context menu of the list of accounts → Load a chart of accounts



The input file must be a **delimited text file** (TAB, comma, semicolon, or any other character). To do this, you can use a spreadsheet like LibreOffice Calc or Microsoft Excel (remember to save the file **in text format with separator**), or even a simple word processor like Notepad, PSPad, NotePad++, etc. It must include, per line:

- the chart of accounts code (15 car maximum),
- the plan wording (100 car maximum).

Any line starting with the character “#” will be considered a comment.

The magic wand allows you to generate a file ready to be loaded.

Select the import file, then the update option:

- **Initial loading** will cause a deletion of the current chart of accounts, and its replacement with the loaded chart of accounts.
- **Updating accounts** will cause an update of the accounts: if the account did not exist, it will be created, and if it already existed, its name will be updated.

After any chart of accounts loading

The modification of the chart of accounts is likely to modify the imputations, and the accounting links, if certain accounting codes used by one or the other are deleted by loading the new chart of accounts.

Particularly, if in the account assignments or connections, an account present in the initial chart of accounts was no longer present in the new chart of accounts, it will be updated with the root of the account (for example, if you had an account 401123 in the old plan but not in the new one, it will be replaced by code 4).

After loading a new chart of accounts, you must therefore check the [general accounting configuration](#), the [imputations](#), and the [accounting liaisons](#).

☐ France Gestan ☐ accounting plan

The “France Gestan” chart of accounts loaded by default when installing the program is the standard French chart of accounts, in which the following accounts have been added (plan_comptable_france_gestan.txt):

- 44566 deductible VAT on purchases of goods and services
- 44562 Deductible VAT on fixed asset purchases
- 6061 Non-storable supplies (water, energy)
- 6064 Administrative supplies
- 6132 Real estate rentals
- 6135 Movable rentals
- 6226 Fees
- 6251 Travel and travel
- 6257 Receptions
- 6285 Miscellaneous



Other “Tools” articles

[Compilable procedures](#)
[Connection to Gestan](#)
[Database minimization](#)
[Export Gestan database](#)
[Gestan base import](#)
[Gestan directory structure](#)

[Gestan on a USB stick](#)
[Gestan Versions](#)
[Import a chart of accounts](#)
[Import account assignments](#)
[Import contracts into Gestan](#)
[Import Google/Outlook/Notes contacts](#)
[Import parts into Gestan](#)
[Import product translations](#)
[Importing data into Gestan](#)
[Maintenance of HFSQL files](#)
[Mass Parts Removal](#)
[Quick start](#)
[Reallocation of contacts by region](#)
[Reassignment of users](#)
[Rebooking entries](#)
[Reset additional fields](#)
[Reset categories](#)
[Resetting files](#)
[Tips and tricks](#)
[Transfer your data to technical support](#)
[Zip the base](#)

From:

<https://manuel.gestan.fr/> - **Le manuel de Gestan**

Permanent link:

https://manuel.gestan.fr/en/wiki/outils/importer_plancomptable

Last update: **2025/06/24 21:16**